



36 Watt Series

Wall Mount Type

USA / Japan / Taiwan / Europe / UK / Australia / China

AC Plug Changeable

ATS036T - W X X X □

O / P Voltage ←

→ U : US Plug

E : EU Plug

B : UK Plug

A : AU Plug

C : CN Plug

V : Changeable Plug

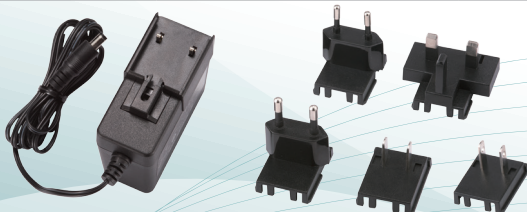
Features :

- IEC/EN/UL 62368-1
- 100-240VAC Universal Input
- Regulated Output With Low Ripple Noise
- Safety Agency Requirements and EMI/EMS Certified
- Modified and Custom Design Available
- 1 Year Warranty

Model	O/P Voltage	O/P Current	Watt
ATS036T-W050□	5.0V	5.00A	25W
ATS036T-W075□	7.5V	4.00A	30W
ATS036T-W085□	8.5V	3.52A	30W
ATS036T-W090□	9.0V	3.34A	30W
ATS036T-W120□	12.0V	3.00A	36W
ATS036T-W121□	12.0V	2.50A	30W
ATS036T-W135□	13.5V	2.66A	36W
ATS036T-W150□	15.0V	2.40A	36W
ATS036T-W160□	16.0V	2.25A	36W
ATS036T-W180□	18.0V	2.00A	36W
ATS036T-W240□	24.0V	1.50A	36W
ATS036T-W480□	48.0V	0.75A	36W

Input

Voltage	100-240VAC	
Line Frequency	50-60Hz	
Current	1A Max.	
Protection	Internal Primary Current Fuse	
Configuration	U for US Plug	B for UK Plug
	E for EU Plug	A for AU Plug
	C for CN Plug	
	V for Changeable Plug	



Output	
Load Regulation	±5% (Typical)
Ripple & Noise	2% Vp-p Max. for Output Voltage@ Full Load
Transient Response	0.5mS for 50% Load Change Typical
Hold-up Time	10mS @ Full Load
Protection	Short Circuit Protection / Over Voltage Protection / Over Current Protection

Electrical

Topology	Switching Flyback
Dielectric Withstand	3000VAC Primary - Secondary
Leakage Current	0.25mA
Efficiency	DoE Level VI, ErP Stage 2, CoC Tier 2
EMC Standards	EN55032
	EN61000-3-2,3
	EN55035
MTBF	300,000 Calculated Hours at 25°C, by Telcordia SR-332

Environmental

Operating Temperature	-20 to + 40°C
Storage Temperature	-20 to + 80°C
Relative Humidity	Operating : 20 to 80% RH
	Storage : 10 to 90% RH
Cooling	Natural Convection Cooling

Mechanical

Case Dimension	U - L 79 x W 34 x H 74 (mm)
	E - L 79 x W 34 x H 94 (mm)
	B - L 79 x W 49 x H 86 (mm)
	A - L 79 x W 41 x H 82 (mm)
	V - L 79 x W 35 x H 66 (mm)
Weight	160g (Ref.)

トキトレーディング株式会社 電話079-560-7333