



I.T.E.

Medical

USB Type-C P.D. 45 / 65 Watt Series

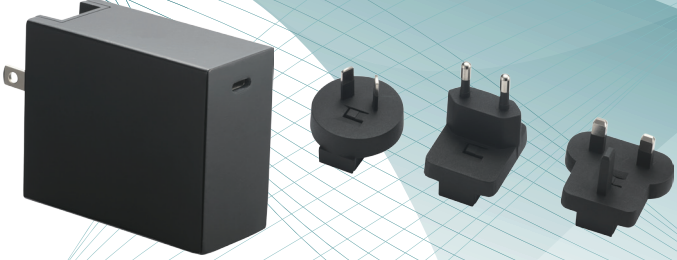
Wall Mount Type
USA / Japan / Taiwan / AC Plug Changeable

ATN045A3 - W200U

U : US Plug / Changeable Plug

ATN065A3 - W200U

U : US Plug / Changeable Plug



Features :

- IEC/EN/ANSI/AAMI ES60601-1 (Edition 3.2)
- EMC : IEC60601-1-2 (Edition 4.1)
- IEC/EN/UL 62368-1 3rd Edition
- Means of Protection : 2 X MOPP
- Touch Current : < 100µA
- 100-240VAC Universal Input
- P.D. 3.0 / QC 4.0+ / QC 4.0
- Regulated Output With Low Ripple Noise
- Safety Agency Requirements and EMI/EMS Certified
- Modified and Custom Design Available
- 2 Years Warranty

Model	O/P Voltage	O/P Current	Watt
ATN045A3-W200U	5.0V	3.00A	15W
	9.0V	3.00A	27W
	12.0V	3.00A	36W
	15.0V	3.00A	45W
	20.0V	2.25A	45W
ATN065A3-W200U	5.0V	3.00A	15W
	9.0V	3.00A	27W
	12.0V	3.00A	36W
	15.0V	3.00A	45W
	20.0V	3.25A	65W

Input	
Voltage	100-240VAC
Line Frequency	50-60Hz
Current	45W : 1A-0.5A / 65W : 1.6A-0.7A
Protection	Internal Primary Current Fuse
Configuration	U for US Plug / AC Plug Changeable

Output	
Load Regulation	±5% (Typical)
Ripple & Noise	200m Vp-p Max. for Output Voltage@ Full Load
Transient Response	0.5mS for 50% Load Change Typical
Hold-up Time	10mS @ Full Load
Protection	Short Circuit Protection / Over Voltage Protection / Over Current Protection

Electrical	
Topology	Switching Flyback
Dielectric Withstand	4000VAC Primary - Secondary
Touch Current	< 100µA
Efficiency	Meet DoE Level VI, ErP Stage 2, CoC Tier 2
EMC Standards	EN55011
	EN61000-3-2,3 EN61000-4-2,3,4,5,6,8,11
MTBF	300,000 Calculated Hours at 25°C , by Telcordia SR-332

Environmental	
Operating Temperature	-20 to + 40°C
Storage Temperature	-20 to + 80°C
Relative Humidity	Operating : 20 to 80% RH
	Storage : 10 to 90% RH
Cooling	Natural Convection Cooling

Mechanical	
Case Dimension	L 53.5 × W 31.5 × H 58 (mm)
Weight	ATN045A3 : 120g (Ref.)
	ATN065A3 : 180g (Ref.)

トキトレーディング株式会社 電話079-560-7333

